

Mitcorp

INDUSTRIAL VIDEOSCOPE

X SERIES



X750
VIDEOSCOPE
MIL-STD
810
APPROVED

Advanced Features, Instantly Accessible

Ergonomic Design

Handy one-handed operation design, including probe roll-up feature and a shoulder straps.
The X750 system is extremely lightweight with 1.2kg in total.

Flexible Modular System

Interchangeable probes and batteries to improve productivity and gives the necessary flexibility for even the most complex applications.

Full Screen Clarity

A 5-inch LCD touchscreen puts precision at your fingertips, ensuring no minor defect goes unnoticed.



Control Your Depth. Expand Your Vision.

One host, total flexibility—switch between a 3.9mm probe with a wide 120° FOV or a 6.0mm probe for sharper detail at 95°

DOF & FOV your way—broad coverage or detailed focus, all controlled within a single system.



1600 x 1600 3.9 mm probe



2560 x 1440 6.0 mm probe

Advanced File Management

Stay organized with the X750 HD. Its file management system lets you sort footage into folders, add tags, and include notes or annotations—making it simple to track every inspection with ease.

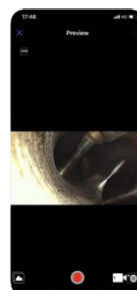


Smooth Mechanical Articulation Control

The X750's advanced mechanical articulation system ensures effortless probe movement with precise joystick control. Easily maneuver in tight spaces, then lock the position instantly for stable, accurate inspections—combining flexibility with reliability.

Connect Your Way All the Outputs You Need

HDMI, USB, and Wi-Fi—everything you need for flexible image viewing and data management. Share instantly with mobile devices, or use the **VideoscopeNow** app for total control.



Advanced Features, Instantly Accessible

Swap modular components with ease—tailor your videoscope to every inspection challenge.

Probes:

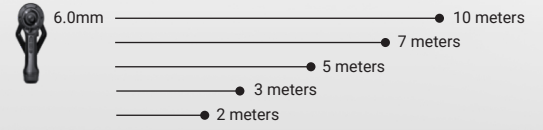
6.0mm, 2m, 3m, 5m, 7m, 10m
3.9mm, 1.5m, 3m



Rechargeable Li-ion battery with a charging station



One host, endless probe possibilities.



Quick-Connect USB-C Design

Easily attach the host unit and probes with the USB TYPE-C connector—fast, reliable, and done in a seconds.



Carrying Tube / Tip Holder

The holder underneath the probe stand allows you to neatly tuck the probe tube and the probe tip away so that the X750 can easily be operated in one hand or hang onto the neck strap when, for example, climbing ladders or moving in other hard to pass terrain.

Rugged & Durable

With an IP67 waterproof rating, X750 performs reliably even in wet conditions. Its robust design endures temperatures up to 100°C and includes a smart high-temperature warning system for added safety. A three-stage temperature warning system keeps you informed as heat levels rise, ensuring you can take action before performance is affected. For added protection, the unit features an automatic shutdown function that activates under extreme.



Engineered & Tested for Reliability

the X750 built to meet U.S. Department of Defense MIL-STD 810 standards. Rigorously tested for protection against:

- Vibration
- Transit drops
- Explosives atmosphere



Dual Directions, One Probe Set-up

The X750 probes feature a dual-view setup, allowing seamless switching between front and side views without removing the probe from the inspection environment or adding mirror tips.

This innovative design significantly reduces inspection time and downtime.

Equipped with dual LEDs, the system ensures optimal illumination for both viewing angles, delivering clear and precise results.



A X750 A 3.9mm 1600x1600, front view



B X750 3.9mm 1600x1600, side view

Dual View Probe Design

A Front View Camera

6.0mm: 2560x1440 pixels FOV 95° DOF 8 mm~∞
3.9mm: 1600x1600 pixels FOV 120° DOF 5~100 mm

B Side View Camera

6.0mm: 2560x1440 pixels FOV 95° DOF 7 mm~∞ / 5~100mm
3.9mm: 1600x1600 pixels FOV 120° DOF 5~100 mm



C Enhanced Neck Design

The 2nd generation of Mitcorp neck design has more joints, and smaller gaps. Provides better protection for internal wiring and stronger resistance against strikes—ensuring long-lasting durability.

Stronger Cables Material

Higher resistance to curvy bending and ensures improved durability, extending the lifespan of the probe under demanding inspection conditions.

Enforced Front Tip Design & Cable Shielding


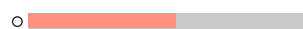


The newly engineered front tip incorporates shock-absorbing silicon material, providing enhanced durability and protection. Higher EMI/EMS protection, ensuring stable performance and reliable signal transmission.

Advanced Light Exposure Control



Mitcorp's light exposure technology enables inspectors to fine-tune illumination for every inspection scenario.

By adjusting LED intensity, ISO sensitivity, and shutter speed—across four stages—the system ensures optimal visibility in both dark and overly bright environments.

-  Stage 1 (LED Off)
-  Stage 2 (LED Illumination Control)
-  Stage 3 (Exposure Value)
-  Stage 4 (Exposure Time)



X750 Probe under dust and water proof test

Probe Specifications:

100°C Heat Resistance

Reliable performance in high-temperature environments

Ultra-Luminance Front LED

Bright, clear illumination for detailed inspections

IP67 Water/Dust proof

Durable protection for tough working conditions

Oil Resistance

The probe is engineered for durability and is resistant to gasoline, diesel, brake oil, transmission oil, and engine oil.

6.0mm Probe Centering Device

The centering device ensures the probe remains properly aligned within the inspection environment, providing more even light distribution.

By reducing friction and direct contact between the probe body and the inspected tube, it helps extend the probe's lifespan.

Acting as both a shock absorber and a protective shield, it enhances durability and inspection reliability.



6.0mm Probe with centering device
Better light distribution & overall view of the inspection environment



6.0mm Probe without centering device
Lack of light distribution & missing the upper view of the inspected environment



18 mm
Centering
Device



38 mm
Centering
Device



65 mm
Centering
Device

ACCESSORIES

- 1 X750 Host Unit
- 2 Probe
- 3 Trolley Case
 - Water Proof - IP67 Rated
 - Drop Resistant
- 4 Rigid Sleeve
 - 2pcs, Each 450mm Long
- 5 Lithium-ion Battery*2
- 6 Charging Station
- 7 Essentials
 - HDMI Cable
 - USB TYPE-C Cable
 - Charging Adapter
 - Cleaning Set
 - SD Card, 64GB
- 8 Neck Strap
- 9 Centering Devices
 - 18mm Centering Device
 - 38mm Centering Device
 - 65mm Centering Device



BASE UNIT	
Hardware	
Operating System	Mitcorp's OS
Display	5" LCD Detachable touchscreen
Display Resolution	800 x 480
Weight	1230g (w/2m tungsten probe)
Size	327.5x152.8x201.3 mm
Dimensions Of Carrying Case	574x361x225mm
Battery	4900mAh replaceable Li-ion battery approximate operation time; 3hrs (with 3m probes),charging time: 6hrs for 2 batteries
Drop Resistance	1 Meter
Backside Camera	2560x1440, .JPG
Connections	
HDMI	TYPE-D HDMI
Data Transfer	USB TYPE-C
Wi-Fi	IEEE 802.11.b/g/n
App Connection	VideoscopeNOW
Power Supply	USB TYPE-C
Storage Media	MicroSD Card. Up to 128GB
Microphone	Built-in
GNSS	GPS, GLONASS Dual Mode
Software Manipulations	
Image Manipulations	Digital zoom and brightness control
Note Text Options	Text annotation
Watermark	Timestamp and *.png logo
Tags	Text tags
Image Configuration	Mirror, negative, grid (for dimensions)
Image Titration	White balance setup, brightness, contrast, saturation, and sharpness.
Folder Management	Sessions and folders
High Temperature Warning	3 Levels of warning, 60°C, 80°C, 100°C (Turn off)
Brightness Control	13 Levels, 1 to 5 LED illumination control, 6 to 10 exposure value, 11 to 13 exposure time
Operating Environment	
System Operating Temperature	-10°C~50°C
Battery Charging Temperature	0°C~45°C
Storage Temperature	-20°C~60°C
In Water	Not operable in water
Relative Humidity	Max 95% non-condensing
Dust And Water Resistance	IP54
ACCESSORIES	
Cables	Power adapter, HDMI cable, TYPE-C cable,
Others	Rigid sleeve, cleaning set, neck strap Centering devices for 6.0mm probes: 18mm, 38mm, 65mm
REGULATORY	
MIL-STD Compliance	
International Standards Organization (IEC)	MIL-STD-810G-CHG-1 Method 514.7
Electromagnetic Compatibility (EMC)	MIL-STD-810G-CHG-1 Method 516.7
Federal Communications Commission (FCC)	MIL-STD-810G-CHG-1 Method 511.6
Other Regulatory	
International Standards Organization (IEC)	
Electromagnetic Compatibility (EMC)	
Federal Communications Commission (FCC)	
PSE (Circular)	
WEEE	
Restriction of Hazardous Substances 2011/65/EU (RoHS 2)	
Restriction of Chemicals Materials EC 1907/2006 – REACH	
Transportation for Lithium Batteries UN38.3	

PROBES

Full Articulation Probes - Dual View

Model	60D4W-FS-2M_TU-M	60D4W-FS-3M_TU-M	60D4W-FS-5M_TU-M	60D4W-FS-7M_TU-M	60D4W-FS-10M_TU-M	39D4W-FS-1.5M-TU-M	39D4W-FS-3M-TU-M
Diameter	6.0mm	6.0mm	6.0mm	6.0mm	6.0mm	3.9mm	3.9mm
Length	2M	3M	5M	7M	10M	1.5M	3M
Direction Of View	Dual view	Dual view	Dual view	Dual view	Dual view	Dual view	Dual view
Probe Head Length	21.5 mm	21.5 mm	24.4 mm	24.4 mm	24.4 mm	21.6 mm	21.6 mm
Field Of View (FOV)	95°	95°	95°	95°	95°	120°	120°
Front Depth Of Field (DOF)	8 mm~∞	8 mm~∞	8 mm~∞	8 mm~∞	8 mm~∞	5~100 mm	5~100 mm
Side Depth Of Field (DOF)	7 mm~∞	7 mm~∞	5~200 mm	5~200 mm	5~200 mm	5~100 mm	5~100 mm
Still Image Resolution	2560x1440	2560x1440	2560x1440	2560x1440	2560x1440	1600x1600	1600x1600
Video Resolution	2560x1440	2560x1440	2560x1440	2560x1440	2560x1440	1600x1600	1600x1600
Articulation	Full way	Full way	Full way	Full way	Full way	Full way	Full way
Articulation Angle	≥ 145°	≥ 145°	≥ 130°	≥ 125°	≥ 110°	≥ 120°	≥ 120°
Probe Head Material	S.Steel	S.Steel	S.Steel	S.Steel	S.Steel	S. Steel	S. Steel
Probe Material	Tungsten	Tungsten	Tungsten	Tungsten	Tungsten	Tungsten	Tungsten
Operating Temp. In Air	-10~100°C	-10~100°C	-10~100°C	-10~100°C	-10~100°C	-10~100°C	-10~100°C
Operating Temp. In Water	10~30°C	10~30°C	10~30°C	10~30°C	10~30°C	10~30°C	10~30°C
Max Pressure Resistance	3 bar	3 bar	3 bar	3 bar	3 bar	1 bar	1 bar
Optional Protective Cap ¹	-	-	-	-	-	-	-
Optional Plastic Sleeve ²	-	-	-	-	-	-	-
Hydraulic Fluids Resistance	Gasoline, diesel, brake oil, transmission oil, engine oil						

Full Articulation Probes - Front View

Model	60D4W-F-2M_TU-F	60D4W-F-3M_TU-F	60D4W-F-5M_TU-F	60D4W-F-7M_TU-F	39D4W-F-1.5M-TU-M	39D4W-F-3M-TU-M
Diameter	6.0mm	6.0mm	6.0mm	6.0mm	3.9mm	3.9mm
Length	2M	3M	5M	7M	1.5M	3M
Direction Of View	Front view	Front view	Front view	Front view	Front view	Front View
Probe Head Length	19.3 mm	19.3 mm	19.3 mm	19.3 mm	13 mm	13 mm
Field Of View (FOV)	90°	90°	90°	90°	120°	120°
Front Depth Of Field (DOF)	25 mm~∞	25 mm~∞	25 mm~∞	25 mm~∞	120°	120°
Side Depth Of Field (DOF)	-	-	-	-	-	-
Still Image Resolution	2560x1440	2560x1440	2560x1440	2560x1440	1600x1600	1600x1600
Video Resolution	2560x1440	2560x1440	2560x1440	2560x1440	1600x1600	1600x1600
Articulation	Full way	Full way	Full way	Full way	Full way	Full way
Articulation Angle	≥ 120°	≥ 120°	≥ 80°	≥ 80°	≥ 140°	≥ 140°
Probe Head Material	S.Steel	S.Steel	S. Steel	S. Steel	S. Steel	S. Steel
Probe Material	Tungsten	Tungsten	Tungsten	Tungsten	Tungsten	Tungsten
Operating Temp. In Air	-10~100°C	-10~100°C	-10~100°C	-10~100°C	-10~100°C	Tungsten
Operating Temp. In Water	10~30°C	10~30°C	10~30°C	10~30°C	10~30°C	10~30°C
Max Pressure Resistance	1 bar	1 bar	1 bar	1 bar	1 bar	1 bar
Optional Protective Cap ¹	-	-	-	-	-	-
Optional Plastic Sleeve ²	-	-	-	-	-	-
Hydraulic Fluids Resistance	Gasoline, diesel, brake oil, transmission oil, engine oil					

