

Mitcorp

INDUSTRIAL VIDEOSCOPE

X SERIES



X600
PLUS
VIDEOSCOPE

Multiple Applications With One Host

- Versatile and lightweight design for inspections in hard-to-reach or hazardous environments.
- Compatible with up to multiple waterproof probes for broad inspection coverage across multiple industries.
- Ideal for manufacturing, HVAC, plumbing, building maintenance, and automotive applications.
- Multiple probe options including small-diameter and articulating designs provide clear and detailed visibility of components.
- Flexible probe construction allows access through narrow openings without disassembling equipment.
- The X600 Plus 1-meter drop-tested for superior durability and reliability in demanding industrial environments.
- Equipped with a 512 Hz transmitter for precise location identification during pipe inspections. This function is fully compatible with the PRSL300T 30 m pipe camera for extended range applications.
- The PRSL300T camera tip features a mechanical self-leveling head to ensure the inspected image remains perfectly level.
- The operating system also provides real-time tilt angle feedback for improved orientation awareness.



ONE HOST MULTIPLE FORM FACTOR



PRSL300T

30.0mm —● 30 Meters, FRP

- X600 Plus host.
- 30 meters flexible FRP probe.
- Self leveling camera.
- Built-in 512 Hz sonde transmitter.
- Water proof.
- Pass through 90 degrees angles



X600 PLUS

4.9mm - Dual View, Semi Rigid —● 3 Meters

—● 1 Meter

4.9mm - Dual View, S.Steel —● 3 Meters

—● 1 Meter

4.2mm - Front View, 4 Way, S.Steel —● 5 Meters

—● 3 Meters

3.9mm - Front View, 4 Way, S.Steel —● 2 Meters

—● 1.5 Meters

3.9mm - Front View, 2 Way, S.Steel —● 1 Meter



Dual View, No Articulation

28.0mm —● 30 Meters, FRP

- X600 Plus host.
- 30 meters flexible FRP probe.
- Water proof.
- Pass through 90 degrees angles.

PRSL 300T Pipe Camera

- 5" Touch Screen
- 30 Meters Push Probe
- Diameter Of 28.8mm Push Camera Tip
- Wi-Fi Image Share
- Mechanical Self Leveling Camera Tip
- OS Auto & Manual Exposure
- OS Meter / Distance Counter
- OS Inclinometer
- Equipped with 512 Hz Transmitter



SelfLeveling



Transmitter



OS Inclinometer



Wi-Fi



Water & Dust Resistance



Mechanical self leveling camera tip



Capable of passing through two 90° pipeline turns

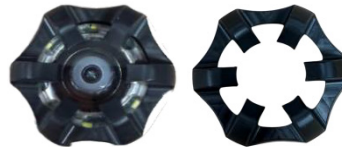


Lay flat usage, & 180° rotation hinge

LT100 Locator

- Easy operation interface
- Up to 1.8 m measurement depth
- IP55 protection
- LED backlight function keys
- 512 Hz receiver

Protective Cap

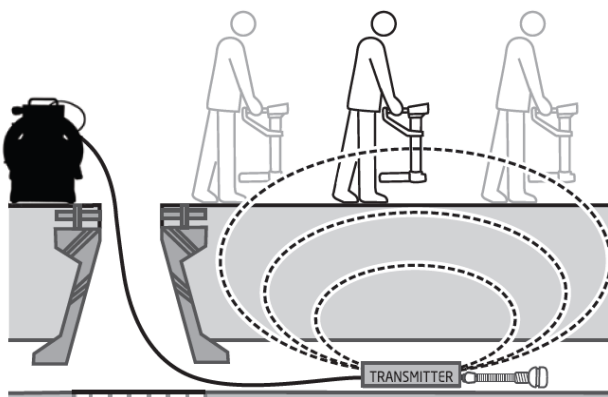


Inspection Field

The PRSL300T is specifically designed for **household plumbing inspections**, offering versatile and practical functions to meet a variety of needs. Equipped with a **512 Hz locator transmitter (Tx)**, it is compatible with all standard 512 Hz receivers. For optimal performance, it is recommended to use with **Mitcorp's LT100 locator**.

WAGON - FOR PRSL 300T

Compatible Pipe Diameters: $\varnothing 150 \sim \varnothing 300\text{mm}$
 Dimensions (on $\varnothing 300$ pipes): 203mm x 122mm x 141mm
 Dimensions (on $\varnothing 150$ pipes): 191mm x 236mm x 272mm
 Weight: 1000g
 Construction Materials: Aluminum & TPR



PRM 2830 Pipe Camera



Wi-Fi



Water & Dust Resistance

- 5" Touch Screen
- 30 Meters Push Probe
- Diameter Of 30mm Push Camera Tip
- Wi-Fi Image Share
- OS Auto & Manual Exposure

Special Features

Wide View Camera FOV

150° camera lens provides maximum inspection area.

High-Definition image output

Capture & record super clear, crisp images.

Digital meter on screen

Display the distance of probe inserted into the inspection.



Centering Devices

Ø50mm , Ø100mm & Ø150mm



WAGON - FOR PRM 2830

Compatible Pipe Diameters: Ø 150 ~ Ø 300mm

Dimensions (on Ø 300 pipes): 203mm x 122mm x 141mm

Dimensions (on Ø 150 pipes): 191mm x 236mm x 272mm

Weight: 1000g

Construction Materials: Aluminum & TPR



Three centering devices included



Rugged waterproof, super bright LED on camera



Capable of passing through two 90° pipeline turns



Lay flat usage, & 180° Rotation hinge



Lay flat usage, & 180° Rotation hinge

X600 PLUS

Multiple Applications With One Host



- The X600 Plus 1-meter drop-tested for superior durability and reliability in demanding industrial environments.
- Versatile and lightweight design for inspections in hard-to-reach or hazardous environments.
- Ideal for manufacturing, HVAC, plumbing, building maintenance, and automotive applications.
- Multiple probe options including small-diameter and articulating designs provide clear and detailed visibility of components.



Wi-Fi



Water & Dust Resistance



MANUFACTURING QUALITY AUTOMOTIVE HVAC BUILDING

Full Screen Clarity

A 5-inch LCD touchscreen puts precision at your fingertips, ensuring no minor defect goes unnoticed.

Auto Exposure / Manual Exposure

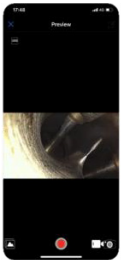
Take control with the touchscreen—adjust exposure effortlessly for the darkest shadows or brightest highlights.

Advanced File Management

Stay organized with the X600 PLUS. Its file management system lets you sort footage into folders, add tags, and include notes or annotations—making it simple to track every inspection with ease.

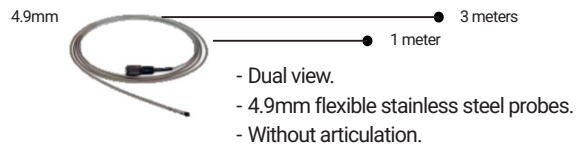
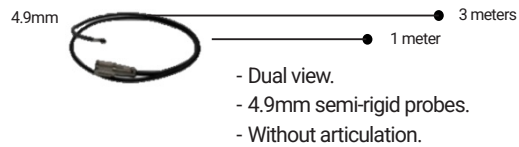
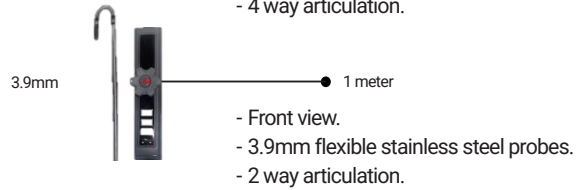
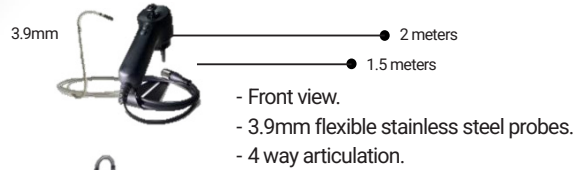
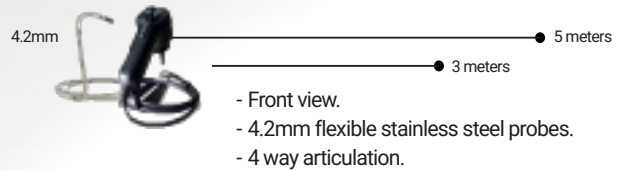
Smooth Mechanical Articulation Control

The X600's advanced mechanical articulation system ensures effortless probe movement with precise joystick control. Easily maneuver in tight spaces, then lock the position instantly for stable, accurate inspections—combining flexibility with reliability.

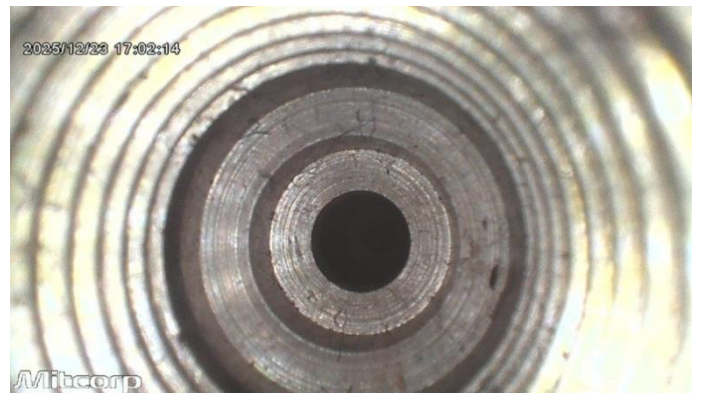


Connect Your Way All the Outputs You Need

HDMI, USB, and Wi-Fi—everything you need for flexible image viewing and data management. Share instantly with mobile devices, or use the **VideoscopeNow** app for total control.



engines with semi-rigid probe



Air compressor with 2 way probe



PIPE CAMERA CASE (Applicable PRSL 300T & PRM 2830)

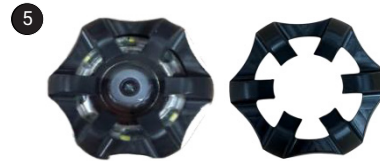
ACCESSORIES

- ① Aluminum Carry Case
- ② X600 PLUS Host Unit
- ③ Steel Probe / Pipe Camera Probe
- ④ Essentials
 - HDMI Cable
 - USB TYPE-C Cable
 - Charging Adapter
 - SD Card, 64GB
- ⑤ Protective Ring (for PRSL 300T Only)
- ⑥ Centering Devices (for PRSL 300T & PRM 2830)

OPTIONALS

- ⑦ Wagon Ø150mm ~ Ø300mm (for PRSL 300T & PRM 2830)
- ⑧ LT100 Locator (for PRSL 300T Only)

PROTECTIVE RING (Applicable to PRSL 300T Only)



CENTERING DEVICES



Ø50mm Metal Centering Device
 Ø100mm Brush Centering Device
 Ø150mm Brush Centering Device



LT100 LOCATOR - FOR PRSL 300T

- Easy operation interface
- Up to 1.8 m measurement depth
- IP55 protection
- LED backlight function keys
- 512 Hz receiver



WAGON - FOR PRSL 300T & PRM 2830

Compatible Pipe Diameters: ø 150 ~ ø 300mm
 Dimensions (on ø 300 pipes): 203mm x 122mm x 141mm
 Dimensions (on ø 150 pipes): 191mm x 236mm x 272mm
 Weight: 1000g
 Construction Materials: Aluminum & TPR

ACCESSORIES

- ① Aluminum Carry Case
- ② X600 PLUS Host Unit
- ③ Steel Probe / Pipe Camera Probe
- ④ Essentials

- HDMI Cable
- USB TYPE-C Cable
- Charging Adapter
- SD Card, 64GB



Additional / Optional Probe Option

An additional pizza box package for:

- 49DFS-3M-SS-M
- 49DFS-1M-SS-M



Stainless Steel Semi-Rigid Probe



BASE UNIT	
Hardware	
Operating System	Mitcorp's OS
Display	5" LCD Touchscreen
Display Resolution	800 x 480
Weight	705g
Size	161.93x 127.93x46 mm
Dimensions Of Carrying Case	527x300x155mm
Battery	Rechargeable Li battery 4900mAh, approximate operation time; 4hrs (with 3m probe), charging time: 3.5hrs
Drop Resistance	1 Meter
Connections	
HDMI	TYPE-D HDMI
Data Transfer	USB TYPE-C
Wi-Fi	IEEE 802.11 .b/g/n
App Connection	VideoscopeNOW
Power Supply	USB TYPE-C
Storage Media	MicroSD Card. Up to 128GB
Software Manipulations	
Image Manipulations	Digital zoom and brightness control
Note Text Options	Text annotation
Watermark	Timestamp and *.png logo
Tags	Text tags
Image Configuration	Mirror, rotation
Image Titration	White balance setup, brightness, contrast, saturation, and sharpness.
Folder Management	Sessions and folders
Operating Environment	
System Operating Temperature	-10°C~50°C
Battery Charging Temperature	0°C~45°C
Storage Temperature	-20°C~60°C
In Water	Not operable in water
Relative Humidity	Max 95% non-condensing
Dust And Water Resistance	IP54
ACCESSORIES	
Cables	TYPE-C cable, HDMI cable
Others	Cleaning set. pipe camera only: 50mm Centering Ring /100mm&150mm Brush
REGULATORY	
International Standards Organization (IEC)	
Electromagnetic Compatibility (EMC)	
Federal Communications Commission (FCC)	
Other Regulatory	
PSE (Circular)	
WEEE	
Restriction of Hazardous Substances 2011/65/EU (RoHS 2)	
Restriction of Chemicals Materials EC 1907/2006 – REACH	
Transportation for Lithium Batteries,UN38.3	

PROBES
Stainless Steel - Dual View

Model	49DFS-3M-SS-M	49DFS-1M-SS-M	49HD-FS-1M-SR	49HD-FS-3M-SR				
Diameter	4.9mm	4.9mm	4.9mm	4.9mm				
Length	3M	1M	1M	3M				
Direction Of View	Dual view	Dual view	Dual view	Dual view				
Probe Head Length	27.9mm	27.9mm	21.8mm	21.8mm				
Field Of View (FOV)	90°	90°	90°	90°				
Front Depth Of Field (DOF)	10~100 mm	10~100 mm	10~100 mm	10~100 mm				
Side Depth Of Field (DOF)	10~100 mm	10~100 mm	10~100 mm	10~100 mm				
Still Image Resolution	1920x1080	1920x1080	1920x1080	1920x1080				
Video Resolution	1920x1080	1920x1080	1920x1080	1920x1080				
Articulation	-	-	-	-				
Articulation Angle	-	-	-	-				
Probe Head Material	S.Steel	S.Steel	S.Steel	S.Steel				
Probe Material	S.Steel	S.Steel	Cu/Zn Iron+ED	Cu/Zn Iron+ED				
Operating Temp. In Air	-10~60°C	-10~60°C	-10~60°C	-10~60°C				
Operating Temp. In Water	10~30°C	10~30°C	10~30°C	10~30°C				
Max Pressure Resistance	1 bar	1 bar	1 bar	1 bar				
Optional Protective Cap ¹	Yes - Ø5.4mm	Yes - Ø5.4mm	Yes - Ø5.4mm	Yes - Ø5.4mm				
Optional Plastic Sleeve ²	-	-	-	-				
Hydraulic Fluids Resistance	Gasoline, diesel, brake oil, transmission oil, engine oil							

Stainless Steel - Front View

Model	42HD4W-F-3M-SS	42HD4W-F-5M-SS	39HD2W-F-1M-SS	39HD4W-F-1.5M-SS	39HD4W-2M-SS			
Diameter	4.2mm	4.2mm	3.9mm	3.9mm	3.9mm			
Length	3M	5M	1M	1.5M	2M			
Direction Of View	Front View	Front View	Front View	Front View	Front View			
Probe Head Length	22mm	22mm	17mm	17mm	17mm			
Field Of View (FOV)	90°	90°	90°	90°	90°			
Front Depth Of Field (DOF)	10~100 mm	10~100 mm	10~100 mm	10~100 mm	10~100 mm			
Side Depth Of Field (DOF)	-	-	-	-	-			
Still Image Resolution	1920x1080	1920x1080	1920x1080	1920x1080	1920x1080			
Video Resolution	1920x1080	1920x1080	1920x1080	1920x1080	1920x1080			
Articulation	Full way	Full way	Two way	Full way	Full way			
Articulation Angle	135°	135°	180°	180°	180°			
Probe Head Material	S.Steel	S.Steel	S.Steel	S.Steel	S.Steel			
Probe Material	S.Steel	S.Steel	S.Steel	S.Steel	S.Steel			
Operating Temp. In Air	-10~60°C	-10~60°C	-10~60°C	-10~60°C	-10~60°C			
Operating Temp. In Water	10~30°C	10~30°C	10~30°C	10~30°C	10~30°C			
Max Pressure Resistance	1 bar	1 bar	1 bar	1 bar	1 bar			
Optional Protective Cap ¹	-	-	-	-	-			
Optional Plastic Sleeve ²	-	-	-	-	-			
Hydraulic Fluids Resistance	Gasoline, diesel, brake oil, transmission oil, engine oil							

Pipe Cameras

Model	PRSL 300T	PRM 2830						
Diameter	28.8mm	28.0mm						
Length	30M	30M						
Direction Of View	Front View	Front View						
Self-Leveling	Mechanical	-						
Probe Head Length	40.7mm	38.4mm						
Field Of View (FOV)	150°	150°						
Front Depth Of Field (DOF)	20 mm~∞	20 mm~∞						
Side Depth Of Field (DOF)	-	-						
Sonde Transmitter	512 Hz	-						
Still Image Resolution	1920x1080	1920x1080						
Video Resolution	1920x1080	1920x1080						
Articulation	-	-						
Articulation Angle	-	-						
Probe Head Material	S.Steel	S.Steel						
Probe Material	FRP	FRP						
Operating Temp. In Air	-10~60°C	-10~60°C						
Operating Temp. In Water	10~30°C	10~30°C						
Max Pressure Resistance	3 bar	3 bar						
Optional Protective Cap ¹	-	-						
Optional Plastic Sleeve ²	-	-						
Hydraulic Fluids Resistance	Gasoline, diesel, brake oil, transmission oil, engine oil							

LOCATOR - FOR PRSL 300T

Model	LT100
Weight	2000g
Size	293.5x144.0x486.5 mm
Battery	Rechargeable 3.7V / 4900mA Li battery, approximate operation time; 6~7hrs, charging time: 4hrs
Power adapter R5	Output: DC 5V 3A
Drop Resistance	30cm
Sonde Receiver	Compatible with any 512 Hz transmitter devices
System Operating Temperature	-10°C~50°C
Battery Charging Temperature	0°C~45°C
Storage Temperature	-20°C~60°C
Dust And Water Resistance	IP55
Applicable material	Concrete, reinforced concrete, brick

