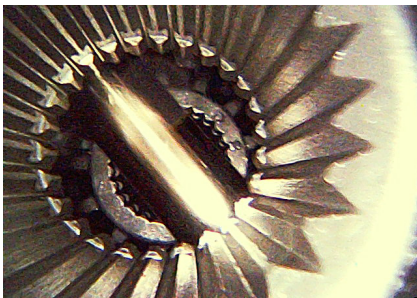


ALL NEW X600 HD VIDEOSCOPE SERIES

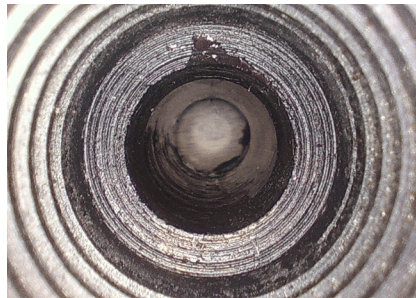


All True HD image quality

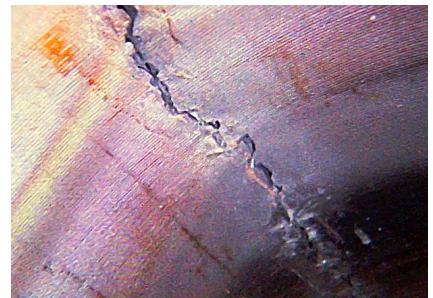
High-definition image processing technology X600 delivers super accurate photos and videos. The image quality allows you to see even the tiniest details during inspection. More accurate inspections bring more uptime and greater value across a variety of industries and application cases.



GEAR BOX



AIR COMPRESSOR



CRACKING



**LARGE 5"
TOUCHSCREEN
ANTI-GLARE DISPLAY**



**INGRESS PROTECTION
RATING**



**PROFESSIONAL INSERT
PROBES**



MICRO SD CARD



**OPERATING TIME OF
200 MINUTES**



TRUE HD RESOLUTION



USB-C CHARGING

PROBES

The X600 series is versatile, professional videoscope that you can rely on when inspecting locations that are difficult or unsafe to access. Unique compatible probes with waterproof (IP67) camera tips are available to give you flexibility for any type of inspection

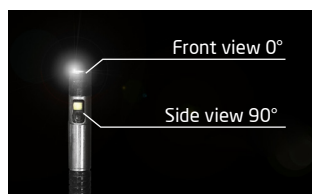


X600-3.9 mm 4 WAY articulating



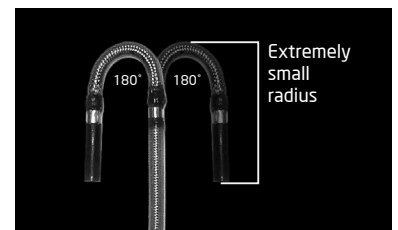
- Ergonomic articulation joystick with angle lock.
- 1.5 m/2 m length stainless steel out braid tube.
- Super lightweight portable design.
- IP67 camera head & probe tube.

4.9 mm DUAL camera



Switch between the camera 0° and 90° in one touch. Two cameras installed in one distal tip. See everything at first inspection. No need to search for the problem again. Efficiency means everything!

3.9 mm 2 WAY articulating



If 4.9 mm is not small enough, 3.9 mm with 2-way articulation is ready for you. A light touch produces an immediate response and precise movement. It is easier to steer the probe to find the inspection target. What the thumb does is what the eye sees.

ACCESSORIES



Aluminium carry case (with EVA foam inner)



DC Adaptor



USB cable



HDMI cable



Micro SD card

- Optional probe

An additional pizza box package for the '49HD-FS-1M-SR' probe when it is in purchase list.



49HD-FS-1M-SR

SPECIFICATIONS

Base Unit

Model	X600
Display	5" Touchscreen 800 x 480 pixels
Power supply	Rechargeable Li-battery
Charing time	2.5 hours (in average)
Working time	4 hours (in average)
Video output	Micro HDMI
Data transfer / Charging	USB-C
DC Power adapter	5V / 3A
Storage	Micro SD up to 64GB
Image format	JPEG, 1920x1080
Video format	MP4, 1920x1080
IP Rating	IP54
Drop resistance	1 meter

Probes

Model	49HD-FS-1M / 3M-SR	39HD2W-F-1M-SS	39HD4W-F-1.5M / 2M-SS
Diameter	4.9 mm	3.9 mm	3.9 mm
Length	1 m / 3 m	1 m	1.5 m / 2 m
Direct of view	Front view 0° / Side view 90°	Front view	Front view
Illumination	Front / Side LEDs	Front LEDs	Front LEDs
FOV (Field of View)	90°	90°	90°
DOF (Depth of Field)	10 mm~100 mm	10 mm~100 mm	10 mm~100 mm
Articulation	N/A	2 way 180°	4 ways 180°
Buttons	N/A	Snapshot / Video, Brightness +/-	
Material	Semi-rigid steel	Stainless steel braided	
Liquid resistance	Unleaded gasoline, diesel, machine oil, brake oil, transmission oil, water		
IP Rating	IP67		
Working temp	-10°C~60°C		